

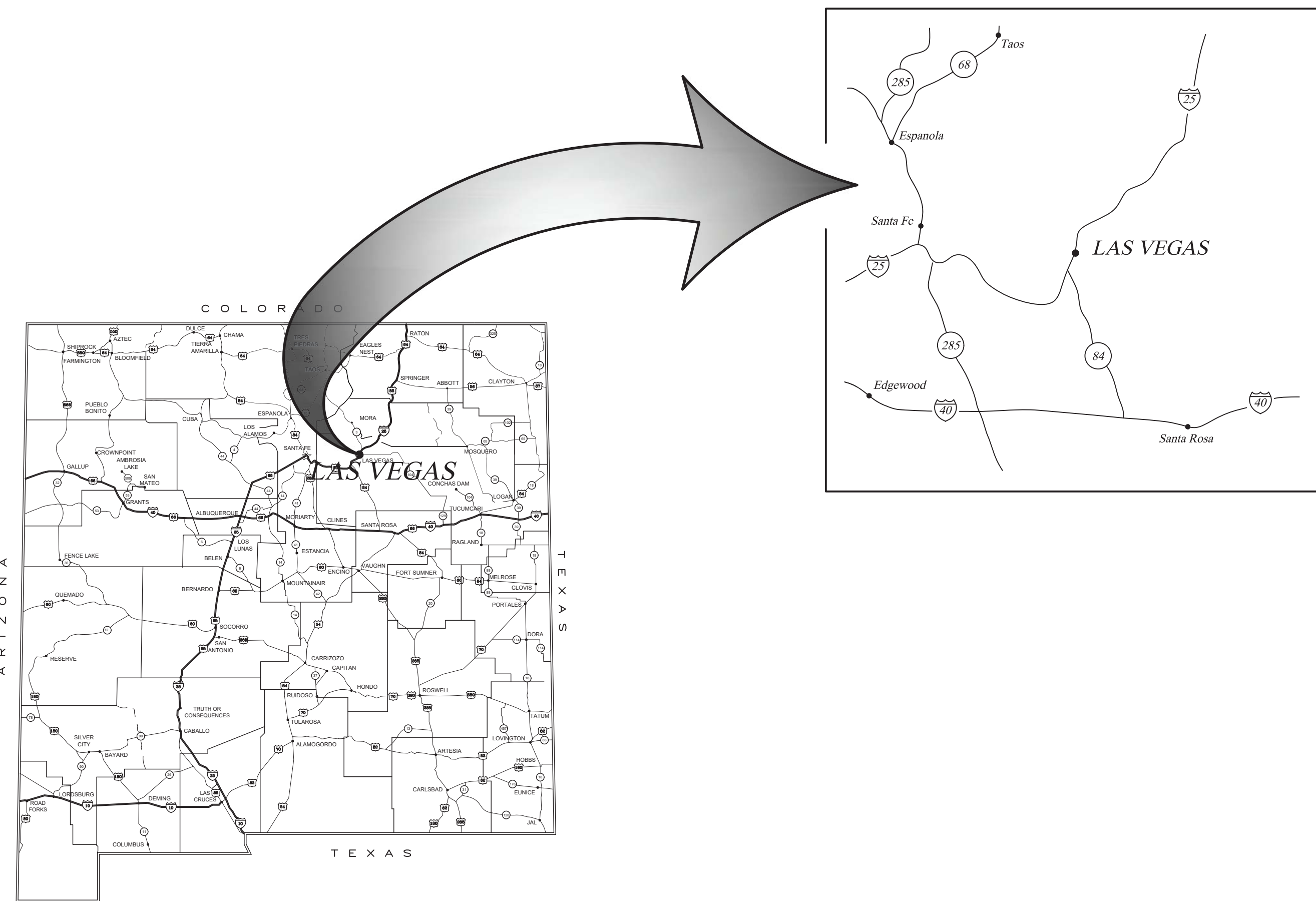
# LAS VEGAS MUNICIPAL AIRPORT (LVS) SAN MIGUEL COUNTY LAS VEGAS, NEW MEXICO

JUNE, 2023

construction plans for the

## APRON, TAXILANES, & TAXIWAY B PAVEMENT SEAL AND MARKING

Las Vegas Municipal Airport  
910 Airport Road  
Las Vegas, NM 87701



VICINITY MAP

CERTIFICATION:

I, JOHN M. PROVIN, REGISTERED  
PROFESSIONAL ENGINEER NO. 10997  
HEREBY CERTIFY THAT THE FOLLOWING PLANS AND  
DESIGNS WERE MADE UNDER MY SUPERVISION  
AND DIRECTION AND THAT SAME IS TRUE AND CORRECT  
TO THE BEST OF MY KNOWLEDGE AND BELIEF



JOHN M. PROVIN, P.E.

NO. 10997

### MOLZENCORBIN

ENGINEERS | ARCHITECTS | PLANNERS

2701 Miles Road SE, Albuquerque, New Mexico 87106 505 242 5700 office Molzencorbin.com



Molzencorbin Project Number: LVG180-19

G-001

Sheet 1 / 10

DESCRIPTION	REV DATE	REV NO
		1

NUMERIC SCALE CONFIRMATION

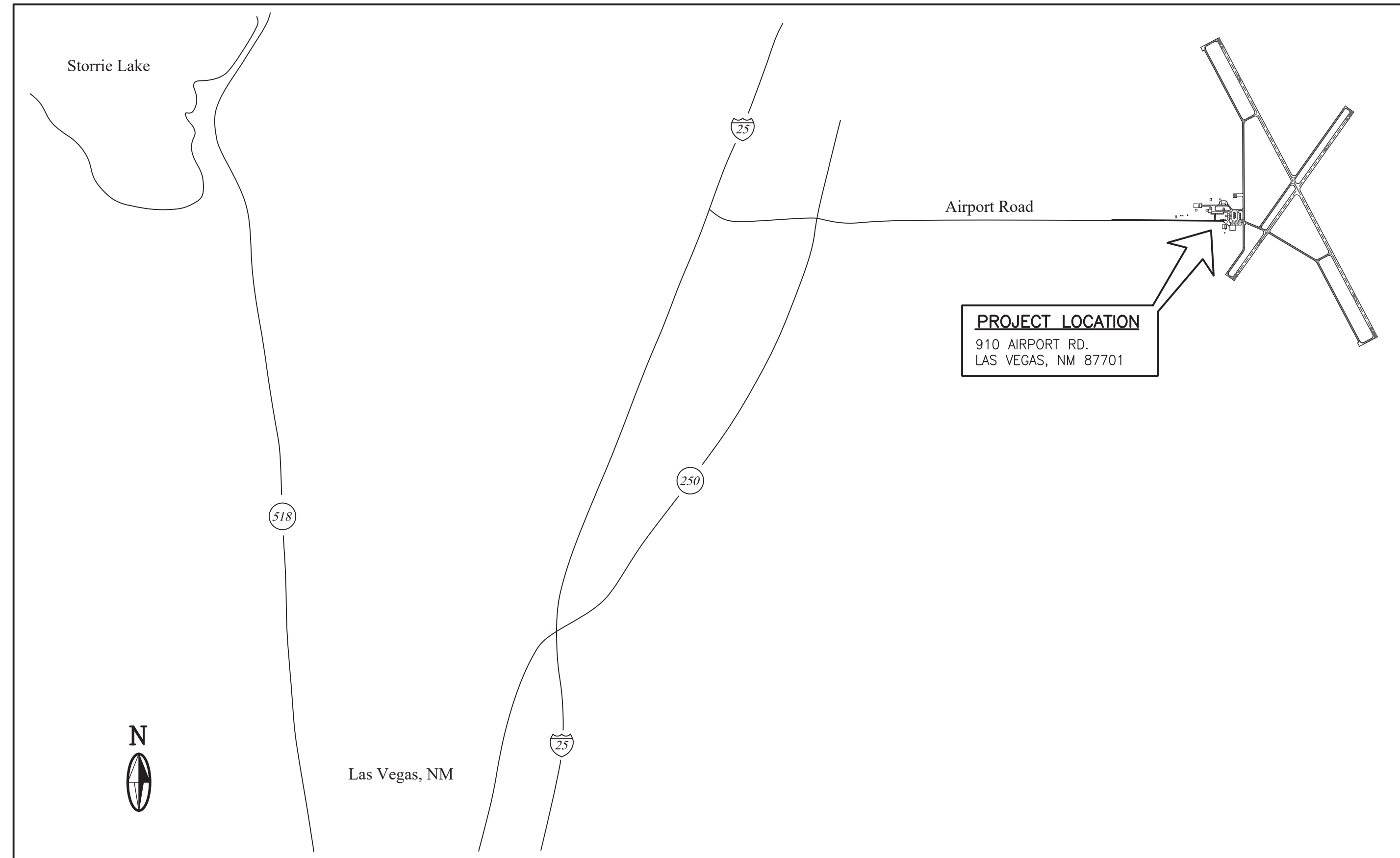
DRAWINGS ARE DEPICTED AT INTENDED  
NUMERIC SCALES  
IF THIS BAR EQUALS ONE INCH



THESE DRAWINGS DO NOT INCLUDE NECESSARY COMPONENTS FOR THE CONSTRUCTION SAFETY WHICH SHALL REMAIN THE RESPONSIBILITY OF THE CONTRACTOR.

ALL IDEAS, DESIGNS, ARRANGEMENTS, AND PLANS INDICATED OR REPRESENTED BY THIS INSTRUMENT ARE OWNED BY AND THE PROPERTY OF MOLZEN-CORBIN & ASSOCIATES, AND WERE CREATED AND DEVELOPED FOR USE ON AND IN CONNECTION WITH THE SPECIFIED PROJECT. THESE IDEAS, DESIGNS, ARRANGEMENTS OR PLANS SHALL NOT BE USED BY ANY PERSON, FIRM, OR CORPORATION FOR ANY PURPOSE WHATSOEVER WITHOUT THE WRITTEN CONSENT OF MOLZEN-CORBIN & ASSOCIATES.

THESE DRAWINGS REFLECT INFORMATION ON UTILITIES GATHERED BY SITE INSPECTION, DISCUSSIONS WITH MUNICIPAL OFFICIALS, AND PREVIOUS CONSTRUCTION DOCUMENTS. IT IS POSSIBLE THAT THE EXACT LOCATION OF LINES AND UTILITY CONNECTION POINTS IN THE VICINITY OF REQUIRED WORK MAY BE DIFFERENT FROM THE LOCATION SHOWN ON THESE DRAWINGS. PRIOR TO CONSTRUCTION THE CONTRACTOR SHALL EXCAVATE AND VERIFY THE HORIZONTAL AND VERTICAL LOCATIONS OF ALL OBSTRUCTIONS. SHOULD A CONFLICT EXIST THE CONTRACTOR SHALL NOTIFY THE ENGINEER SO THE CONFLICT CAN BE RESOLVED WITH A MINIMUM AMOUNT OF DELAY.



**PROJECT LOCATION**

SCALE: NONE

**PROJECT LOCATION**  
 910 AIRPORT RD.  
 LAS VEGAS, NM 87701

**INDEX TO DRAWINGS**

SHEET NUMBER	SHEET TITLE	SHEET DESCRIPTION
GENERAL		
1	G-001	TITLE SHEET
2	G-002	PROJECT INFORMATION SHEET
3	G-101	AIRPORT LAYOUT PLAN
4	G-102	CONSTRUCTION PHASING/SAFETY PLAN - PHASE 1
5	G-103	CONSTRUCTION PHASING/SAFETY PLAN - PHASE 2
6	G-104	CONSTRUCTION PHASING/SAFETY PLAN - PHASE 3
7	G-105	CONSTRUCTION PHASING/SAFETY PLAN - PHASE 4
CIVIL		
8	C-101	TAXIWAY B REHABILITATION PLAN
9	C-102	AIRCRAFT APRON REHABILITATION PLAN
10	C-501	MISCELLANEOUS DETAILS

**GENERAL NOTES**

1. THE CONTRACTOR SHALL FURNISH AND USE A TWO-WAY RADIO OPERATING ON THE AIRPORT FREQUENCIES. THE CONTRACTOR SHALL KEEP THE AIRPORT MANAGER AND AIR TRAFFIC CONTROL PERSONNEL ADVISED OF ANY ACTIVITIES AFFECTING THE OPERATION OF THE ACTIVE RUNWAYS AND TAXIWAYS.
2. WHEN ANY VEHICLES OR EQUIPMENT ARE TO CROSS ANY ACTIVE TAXIWAY OR RUNWAY, THE CONTRACTOR SHALL HAVE A FLAG PERSON STATIONED TO STOP ALL VEHICULAR TRAFFIC AS REQUIRED TO ALLOW UNINTERRUPTED PASSAGE OF AIRCRAFT. THE CONTRACTOR SHALL KEEP ON HAND AT EACH CROSSING SUITABLE POWERED SWEEPING EQUIPMENT AND SHALL KEEP THE ENTIRE PAVED AREA OF SUCH CROSSINGS FREE OF ALL CONSTRUCTION LITTER AND DEBRIS. SEE SHEET G-102 TO G-105 FOR ADDITIONAL REQUIREMENTS.
3. ALL THE CONTRACTOR'S VEHICLES AND MOVING EQUIPMENT WITHIN THE AIRPORT PROPERTY SHALL CARRY RED AND WHITE CHECKERED FLAGS (SEE AC 150/5210-5D IN THE SPECIAL PROVISIONS), AND IT IS RECOMMENDED THAT THE CONTRACTOR EQUIP MAJOR EQUIPMENT AND ALL VEHICLES WITH FLASHING YELLOW DOME LIGHTS, BRIGHT ORANGE BARRELS AND BARRICADING WITH BRIGHT COLORED PLASTIC FLAGGING SHALL BE PROVIDED AND PLACED AS DIRECTED BY THE ENGINEER AS REQUIRED TO DEFINE AIRCRAFT TAXILANES ETC. SEE SHEET G-102 TO G-105 FOR ADDITIONAL REQUIREMENTS.
4. SINCE THE EXTENT AND DURATION OF TEMPORARY MEASURES NECESSARY FOR AIRPORT SECURITY AND SAFETY DURING THE CONSTRUCTION PERIOD ARE LARGELY DEPENDENT ON THE CONTRACTOR'S SCHEDULING AND EFFICIENT PROSECUTION OF THE WORK, THE COST OF ALL SUCH MEASURES (BARRICADING, MARKING, TEMPORARY ACCESS ROADS, FENCING, CONSTRUCTION AREA MAINTENANCE AND CLEAN-UP, ETC.) SHALL BE CONSIDERED INCIDENTAL TO THE WORK AND NO SEPARATE MEASUREMENT OR PAYMENT WILL BE MADE THEREFOR, EXCEPT AS OTHERWISE MAY BE SPECIFICALLY PROVIDED FOR IN THE CONTRACT DOCUMENTS AND BID PROPOSAL.
5. THE CONTRACTOR SHALL BE ALERT TO THE POSSIBILITY OF EMERGENCY SITUATIONS ARISING AT ANY TIME, AND SHALL COOPERATE FULLY WITH THE ENGINEER AND THE AIRPORT MANAGER IN COPING WITH ANY EMERGENCY INVOLVING AIRCRAFT.
6. ALL SALVAGEABLE MATERIAL ON THIS PROJECT IS THE PROPERTY OF LAS VEGAS MUNICIPAL AIRPORT.

**CONSTRUCTION SCHEDULING**

1. THE CONTRACTOR SHALL PREPARE AND SUBMIT FOR APPROVAL AN ESTIMATED PROGRESS SCHEDULE AS PROVIDED IN THE CONTRACT DOCUMENTS AND SHALL MAINTAIN AND UPDATE THIS SCHEDULE AS NECESSARY DURING THE CONSTRUCTION.
2. WEEKLY CONSTRUCTION PROGRESS MEETINGS WILL BE REQUIRED.
3. SEE SHEET G-102 TO G-105 FOR CONSTRUCTION PHASING AND SAFETY PLAN.

**WORK INCLUDED IN THIS PROJECT**

- CRACK SEAL AND SURFACE SEAL OF EXISTING AIRFIELD PAVEMENT
- AIRFIELD SURFACE MARKINGS

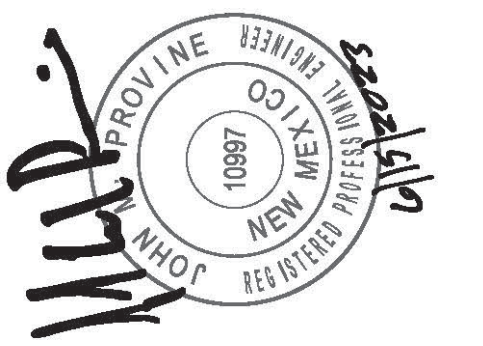
**MOLZENCORBIN**

2701 Miles Road SE  
 Albuquerque, New Mexico 87106  
 505 242 5700 office  
 505 242 0673 fax  
 MolzenCorbin.com

*NOTICE OF EXTENDED PAYMENT PROVISION:*  
 THIS CONTRACT ALLOWS THE OWNER TO MAKE  
 PAYMENT WITHIN 45 DAYS AFTER SUBMISSION  
 OF AN UNDISPUTED REQUEST FOR PAYMENT

**NUMERIC SCALE CONFIRMATION**

DRAWINGS ARE DEPICTED AT INTENDED  
 NUMERIC SCALES  
 IF THIS BAR EQUALS ONE INCH



REV. NO.	REV. DATE	DESCRIPTION

PROJECT NUMBER:	LVG180-19
DESIGNED BY:	
DRAWN BY:	
CHECKED BY:	
PRIME DESIGN PROFESSIONAL:	MIKE PROVINCE
PROJECT DATE:	JUNE, 2023

**PROJECT INFORMATION SHEET**

**APRON, TAXILANES, & TAXIWAY B PAVEMENT SEAL AND MARKING**  
 LAS VEGAS MUNICIPAL AIRPORT (LVS)  
 LAS VEGAS, NEW MEXICO

**G-002**

SHEET 2 / 10

PLANT DATE: 6/12/2023 8:52 AM  
 SAVE DATE: 6/12/2023 8:52 AM  
 P:\A06254\180-19 APRON, TAXILANE PAVEMENT SEAL MARKING.DWG:GLV-002

**MOLZENCORBIN**

2701 Miles Road SE  
Albuquerque, New Mexico 87106  
505 242 5700 office  
505 242 0673 fax  
MolzenCorbin.com

**NOTICE OF EXTENDED PAYMENT PROVISION:**  
THIS CONTRACT ALLOWS THE OWNER TO MAKE  
PAYMENT WITHIN 45 DAYS AFTER SUBMISSION  
OF AN UNDISPUTED REQUEST FOR PAYMENT

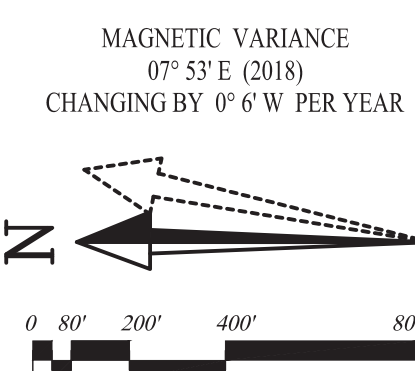
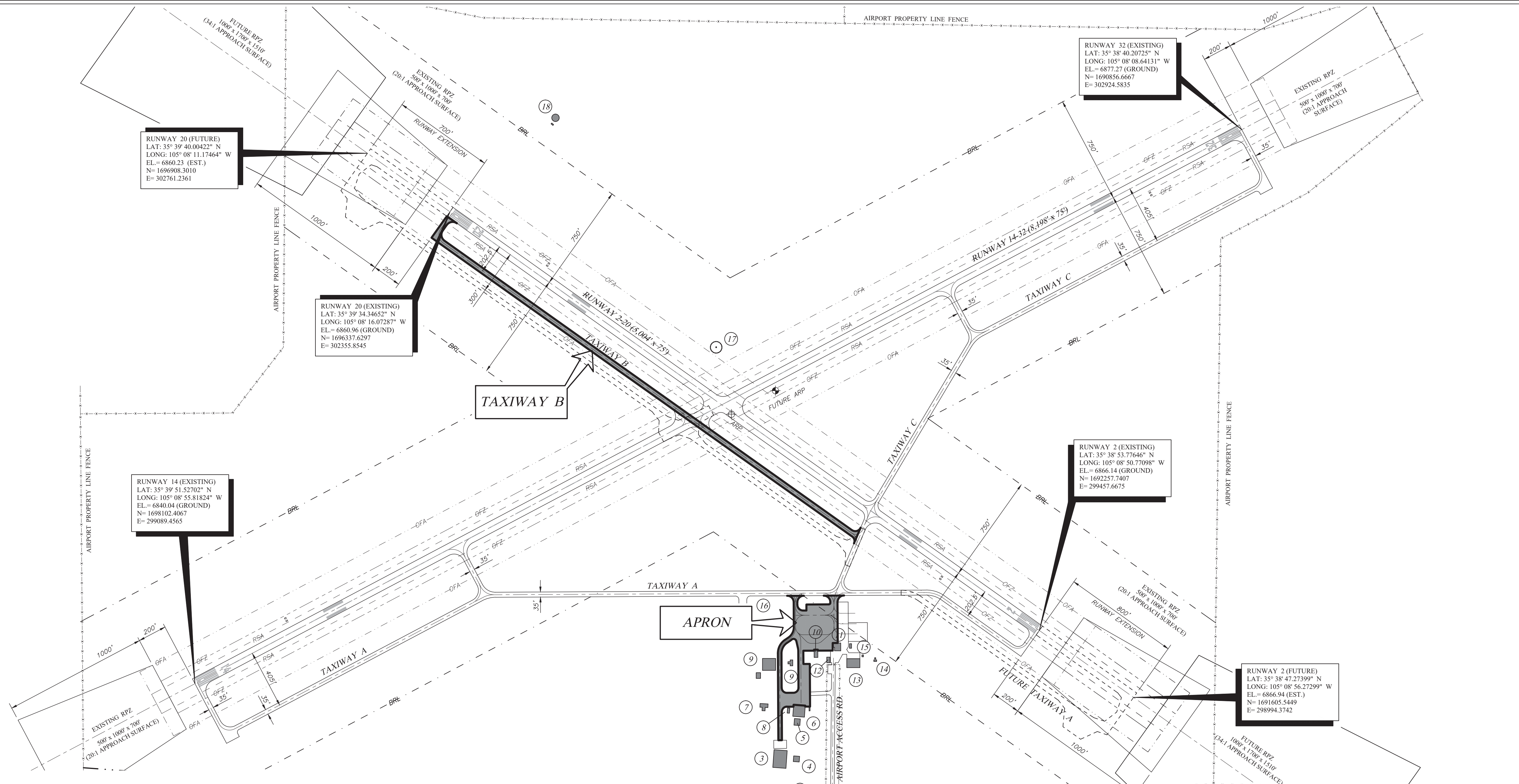
**NUMERIC SCALE CONFIRMATION**  
DRAWINGS ARE DEPICTED AT INTENDED  
NUMERIC SCALES  
IF THIS BAR EQUALS ONE INCH



REV. NO.	REV. DATE	DESCRIPTION
PROJECT NUMBER:	LVG180-19	
DESIGNED BY:		
DRAWN BY:		
CHECKED BY:		
PRIME DESIGN PROFESSIONAL:	MIKE PROVINCE	
PROJECT DATE:	JUNE, 2023	

**AIRPORT LAYOUT PLAN**  
  
**APRON, TAXILANES, & TAXIWAY B PAVEMENT SEAL AND MARKING**  
**LAS VEGAS MUNICIPAL AIRPORT (LVS)**  
**LAS VEGAS, NEW MEXICO**

**G-101**  
SHEET 3 / 10



RUNWAY DATA	RUNWAY 2		RUNWAY 20		RUNWAY 14		RUNWAY 32	
	EXISTING	FUTURE	EXISTING	FUTURE	EXISTING	FUTURE	EXISTING	FUTURE
RUNWAY MONUMENTATION	NAIL & SHINER	NAIL & SHINER	NAIL & SHINER	NAIL & SHINER	NAIL & SHINER	NAIL & SHINER	NAIL & SHINER	NAIL & SHINER
RUNWAY END COORDINATES	LATITUDE: 35°38'53.77646" N LONGITUDE: 105°08'50.77098" W		LATITUDE: 35°39'34.34652" N LONGITUDE: 105°08'56.22299" W		LATITUDE: 35°39'34.00422" N LONGITUDE: 105°08'16.07287" W		LATITUDE: 35°38'40.20725" N LONGITUDE: 105°08'08.64131" W	
RUNWAY END ELEVATION (FT)	6866.14	6866.94 (EST.)	6860.96	6860.23 (EST.)	6840.04	SAME	6877.27	SAME
RUNWAY DESIGN CODE (RDC)	B-11	B-11	B-11	B-11	B-11	B-11	B-11	B-11
RUNWAY LENGTH AND WIDTH	5004' x 75'	6504' x 75'	5004' x 75'	6504' x 75'	8198' x 75'	SAME	8198' x 75'	SAME
RUNWAY GRADIENT	0.10% ±	0.10% ±	0.10% ±	0.10% ±	0.45% ±	SAME	0.45% ±	SAME
RUNWAY AZIMUTH	35.388°	SAME	35.388°	SAME	152.108°	SAME	152.108°	SAME
RUNWAY PAVEMENT SURFACE	ASPHALT	SAME	ASPHALT	SAME	ASPHALT	SAME	ASPHALT	SAME
PAVEMENT STRENGTH (1000 LBS)	30 SWL/50 SWL	30 SWL/50 SWL	30 SWL/50 SWL	30 SWL/50 SWL	30 SWL/50 SWL	30 SWL/50 SWL	30 SWL/50 SWL	30 SWL/50 SWL
RUNWAY EDGE LIGHTING REFLECTORS	REFLECTORS	MIRL	REFLECTORS	MIRL	MIRL	SAME	MIRL	SAME
RUNWAY MARKING TYPE	NPI	SAME	NPI	SAME	NPI	SAME	NPI	SAME
APPROACH AIDS	ILLUMINATED WIND CONE VASI (NON-STD)	ILLUMINATED WIND CONE PAPI	ILLUMINATED WIND CONE VASI (NON-STD)	ILLUMINATED WIND CONE PAPI	ILLUMINATED WIND CONE PAPI	ILLUMINATED WIND CONE PAPI	ILLUMINATED WIND CONE PAPI	ILLUMINATED WIND CONE PAPI
ASSOCIATED TAXIWAY LIGHTING/REFLECTORS	REFLECTORS	MITL	REFLECTORS	MITL	REFLECTORS	MITL	REFLECTORS	MITL
14 CFR PART 77 APPROACH SURFACE SLOPE	20:1	34:1	20:1	34:1	20:1	34:1	20:1	34:1
APPROACH MINIMUM	VISUAL ≥ 1 MILE	3/4 MILE	VISUAL ≥ 1 MILE	3/4 MILE	VISUAL ≥ 1 MILE	3/4 MILE	VISUAL ≥ 1 MILE	VISUAL ≥ 1 MILE
RUNWAY SAFETY AREA WIDTH (RSA) FT	150	150	150	150	150	150	150	150
RSA LENGTH BEYOND RUNWAY END, FT	300	300	300	300	300	300	300	300
RUNWAY OBJECT FREE AREA WIDTH (OFA) FT	500	500	500	500	500	500	500	500
RNRY OFA LENGTH BEYOND RUNWAY END, FT	300	300	300	300	300	300	300	300
RNRY OBSTACLE FREE ZONE (OFZ) FT, WIDTH	250/5404	400/6904	250/5404	400/6904	250/8598	400/8598	250/8598	400/8598
THRESHOLD SITING SURFACE PENETRATIONS	NO THRESHOLD SITING SURFACE OBJECT PENETRATIONS							
OFZ OBJECT PENETRATIONS	NONE	NONE	NONE	NONE	NONE	NONE	NONE	NONE
TAXIWAY SAFETY AREA WIDTH (TSA) FT	79	SAME	79	SAME	79	SAME	79	SAME
TAXIWAY OBJECT FREE AREA WIDTH (TSA) FT	131	SAME	131	SAME	131	SAME	131	SAME
TOUCHDOWN ZONE (TDZ) ELEVATION, FT	6866.38	6867 (EST.)	6864.5 (EST.)	6863.7 (EST.)	6855.3	SAME	6877.48	SAME

#	DESCRIPTION	TOP ELEVATION
1	COMMUNICATIONS TOWER	6932.8
2	COMMUNICATIONS TOWER	6978.2
3	LOWER HANGAR CHIMNEY STACK	6872.1
4	FUEL TRUCK STORAGE BUILDING	6860.7
5	EQUIPMENT STORAGE BUILDING	6869.0
6	HANGAR	6874.3
7	T-HANGAR	6866.6
8	LIGHT POLE WITH LIGHT	6875.1
9	HANGAR	
10	FUEL	
11	TERMINAL BUILDING	6881.0
12	STORAGE BUILDING	6876.1
13	HANGAR	
14	WATER TANK	6877.0
15	BEACON	6817.9
16	HELIPAD	
17	WINDCONE/SEG. CIRCLE	
18	VORTAC	

EXISTING	ULTIMATE	DESCRIPTION
---	---	AIRPORT FENCING
---	---	PROPERTY LINE
---	---	BUILDING/FACILITIES
---	---	RUNWAY/TAXIWAY AND TAXILANES
---	---	BUILDING RESTRICTION LINE
---	---	OBJECT FREE ZONE
---	---	OBJECT FREE AREA
---	---	RUNWAY SAFETY AREA
---	---	TOPOGRAPHY CONTOUR
---	---	SEGMENTED CIRCLE / WIND CONE
---	---	WINDSOCK (SUPPLEMENTARY)
---	---	AIRPORT REFERENCE POINT
---	---	RUNWAY THRESHOLD LIGHTS

AIRPORT DATA		
LAS VEGAS MUNICIPAL AIRPORT (LVS)		
AIRPORT REFERENCE CODE (ARC)	EXISTING	ULTIMATE
	B-II	SAME
AIRPORT ELEVATION	6877	SAME
AIRPORT REFERENCE POINT (ARP)	LAT: 35°39'15" N LONG: 105°08'33" W	LAT: 35°39'12" N LONG: 105°08'31" W
MEAN MAX. TEMP. OF HOTTEST MONTH	83°F	SAME
NAVIGATION/ VISUAL AIDS	GPS, VOR, ROT. BEACON	GPS, VOR, ROT. BEACON, VASI
AIRPORT ACREAGE	1300	SAME

- NOTES**
- ANY COORDINATES, OR ELEVATIONS THAT MAY BE SHOWN ARE (NAD83, NAVD 88) MODIFIED NM STATE PLANE (GROUND), EAST ZONE US FOOT
  - EXISTING AND FUTURE RPZ AREAS EXTENDING BEYOND THE AIRPORT PROPERTY SHALL BE ACQUIRED IN AVIATION EASEMENTS
  - DEVIATION OF STANDARDS, INADEQUATE SEPARATION BETWEEN RUNWAY 220 AND TAXIWAY A, CURRENT DISTANCE IS 202.5', FUTURE TAXIWAY CONSTRUCTION SEPARATION DISTANCE WILL BE 300.0'

DATE: 6/12/2023 9:45 AM  
 SCALE: 1" = 2000'  
 DRAWN BY: JLD  
 CHECKED BY: JLD  
 PROJECT: LAS VEGAS MUNICIPAL AIRPORT (LVS)









**MOLZENCORBIN**

2701 Miles Road SE  
 Albuquerque, New Mexico 87106  
 505 242 5700 office  
 505 242 0673 fax  
 MolzenCorbin.com

NOTICE OF EXTENDED PAYMENT PROVISION:  
 THIS CONTRACT ALLOWS THE OWNER TO MAKE  
 PAYMENT WITHIN 45 DAYS AFTER SUBMISSION  
 OF AN UNDISPUTED REQUEST FOR PAYMENT

**NUMERIC SCALE CONFIRMATION**  
 DRAWINGS ARE DEPICTED AT INTENDED  
 NUMERIC SCALES  
 IF THIS BAR EQUALS ONE INCH

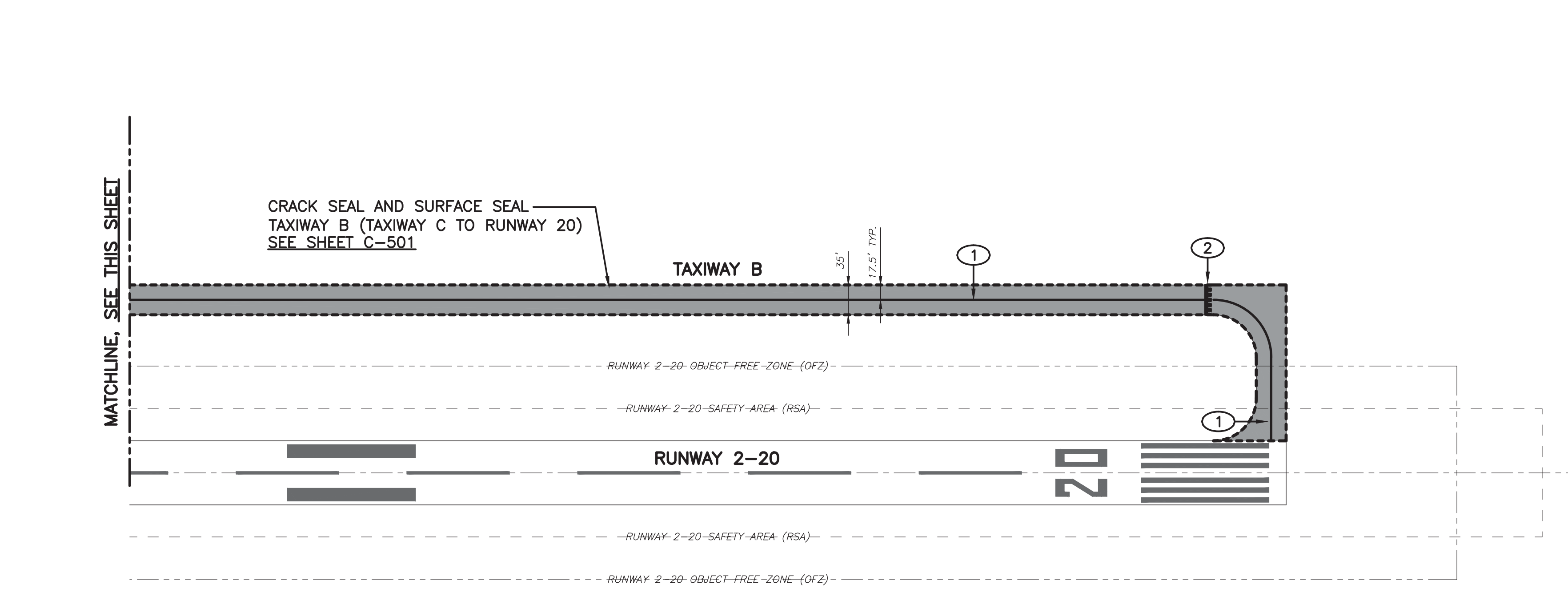
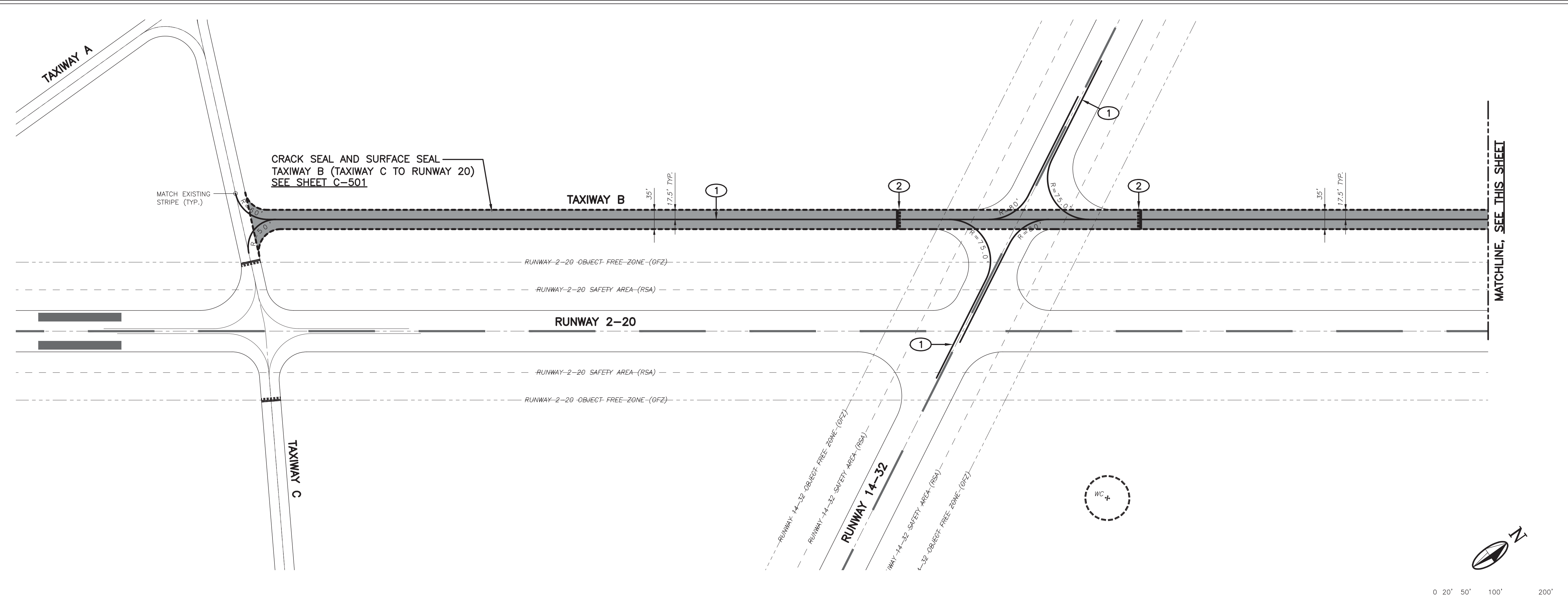


REV. NO.	REV. DATE	DESCRIPTION
PROJECT NUMBER:	LVG180-19	
DESIGNED BY:		
DRAWN BY:		
CHECKED BY:		
PRIME DESIGN PROFESSIONAL:	MIKE PROVINCE	
PROJECT DATE:	JUNE, 2023	

**TAXIWAY B REHABILITATION PLAN**

**APRON, TAXILANES, & TAXIWAY B PAVEMENT SEAL AND MARKING**  
 LAS VEGAS MUNICIPAL AIRPORT (LVS)  
 LAS VEGAS, NEW MEXICO

**C-101**  
 SHEET 8 / 10



**GENERAL NOTES**

- SEE SHEET G-102 TO G-104 FOR CONSTRUCTION PHASING AND SAFETY PLANS
- SEE SHEET C-501 FOR DETAILS

**LEGEND**

- AIRFIELD PAVEMENT CRACK SEAL AND SURFACE SEAL LIMITS  
SEE DETAILS, SHEET C-501
- AIRFIELD PAVEMENT CRACK SEAL LIMITS  
SEE DETAILS, SHEET C-501

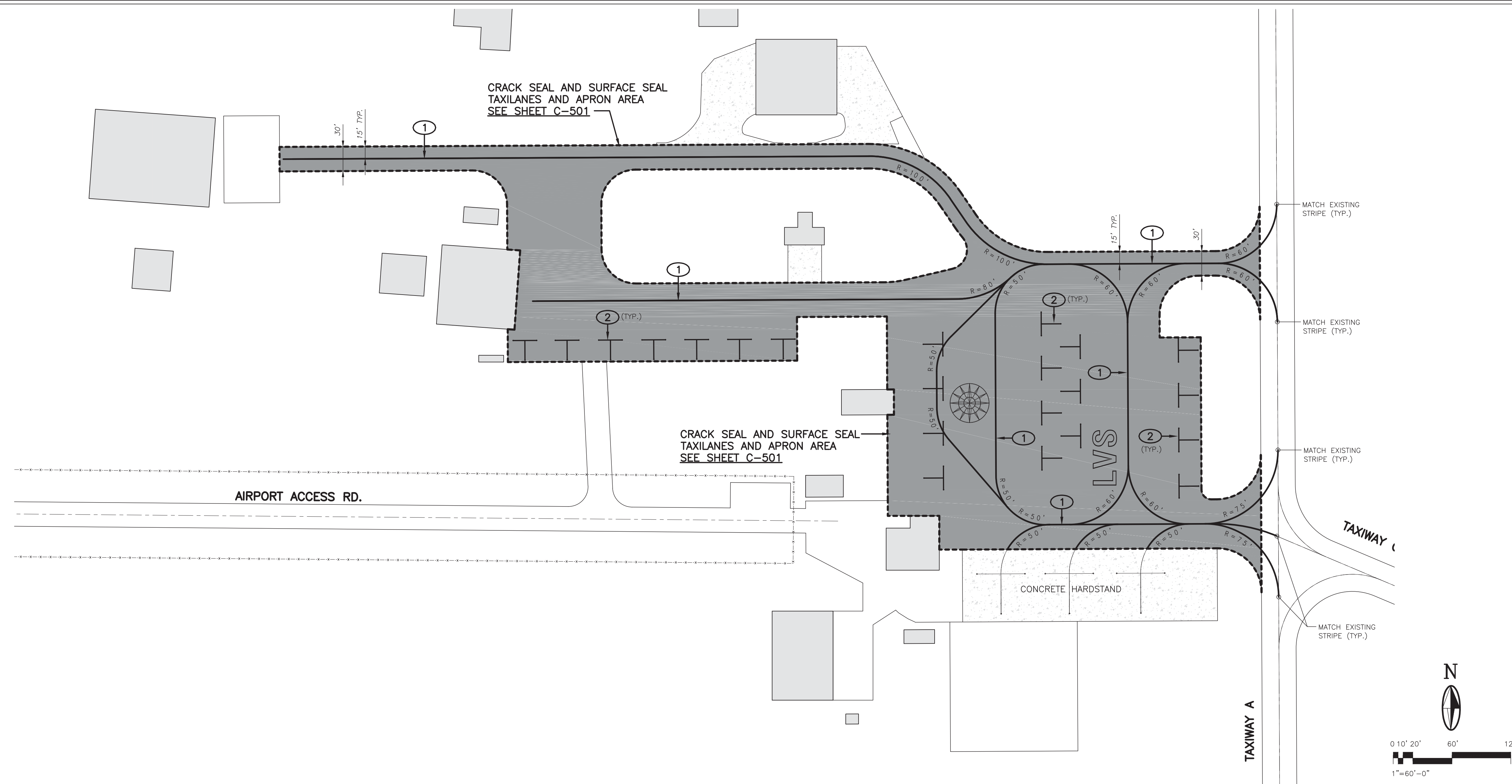
**KEYED NOTES**

- ① 6" WIDE TAXIWAY CENTERLINE STRIPE (AVIATION YELLOW) REPAINT MARKING AT EXISTING LOCATION
- ② RUNWAY HOLDING POSITION MARKING (AVIATION YELLOW) REPAINT MARKING AT EXISTING LOCATION

DATE: 6/15/2023 8:52 AM  
 DATE: 6/15/2023 8:52 AM  
 FILE: LASVEGAS\LVG180-19\APRON, TAXILANE PAVEMENT SEAL MARKING.DWG (LV-101)



PLT DATE: 6/12/2023 8:52 AM  
 SAV DATE: 6/12/2023 8:52 AM  
 I:\A06254\19180-19 APRON, TAXILANE PAVEMENT SEAL MARKING\DWG\CV-102



**MOLZENCORBIN**

2701 Miles Road SE  
 Albuquerque, New Mexico 87106  
 505 242 5700 office  
 505 242 0673 fax  
 MolzenCorbin.com

*NOTICE OF EXTENDED PAYMENT PROVISION:  
 THIS CONTRACT ALLOWS THE OWNER TO MAKE  
 PAYMENT WITHIN 45 DAYS AFTER SUBMISSION  
 OF AN UNDISPUTED REQUEST FOR PAYMENT*

**NUMERIC SCALE CONFIRMATION**  
 DRAWINGS ARE DEPICTED AT INTENDED  
 NUMERIC SCALES  
 IF THIS BAR EQUALS ONE INCH



REV. NO.	REV. DATE	DESCRIPTION

PROJECT NUMBER: LVG180-19  
 DESIGNED BY: [Signature]  
 DRAWN BY: [Signature]  
 CHECKED BY: [Signature]  
 PRIME DESIGN PROFESSIONAL: MIKE PROVINCE  
 PROJECT DATE: JUNE, 2023

**AIRCRAFT APRON REHABILITATION PLAN**

**APRON, TAXILANES, & TAXIWAY B PAVEMENT SEAL AND MARKING**  
 LAS VEGAS MUNICIPAL AIRPORT (LVS)  
 LAS VEGAS, NEW MEXICO

**C-102**

SHEET 9 / 10

**GENERAL NOTES**

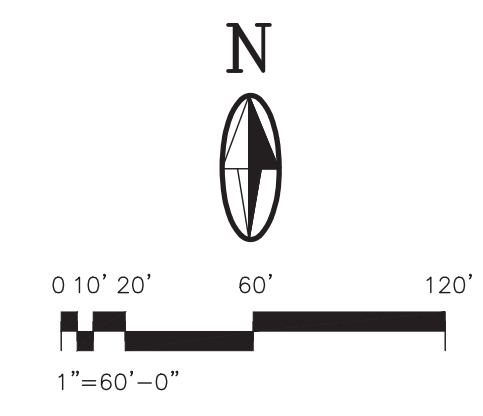
- SEE SHEET G-102 TO G-104 FOR CONSTRUCTION PHASING AND SAFETY PLANS
- SEE SHEET C-501 FOR DETAILS

**LEGEND**

- AIRFIELD PAVEMENT CRACK SEAL AND SURFACE SEAL LIMITS  
SEE DETAILS, SHEET C-501
- AIRFIELD PAVEMENT CRACK SEAL LIMITS  
SEE DETAILS, SHEET C-501

**KEYED NOTES**

- 6" WIDE TAXIWAY CENTERLINE STRIPE (AVIATION YELLOW) REPAINT MARKING AT EXISTING LOCATION
- AIRCRAFT TIE-DOWN MARKING (AVIATION WHITE) REPAINT MARKING AT EXISTING LOCATION

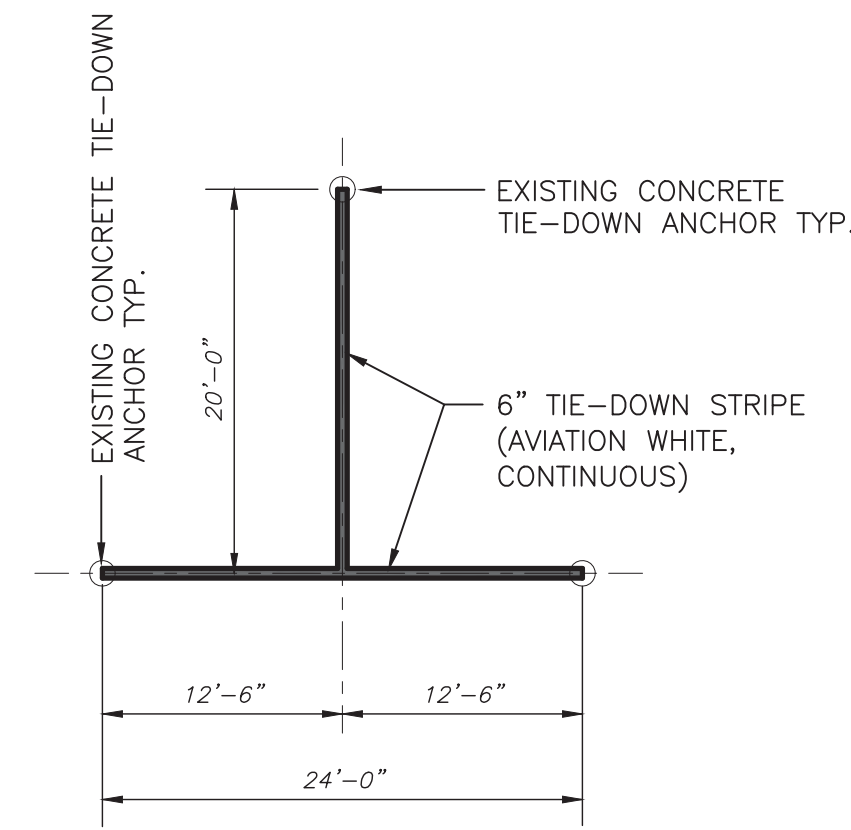


**MOLZENCORBIN**

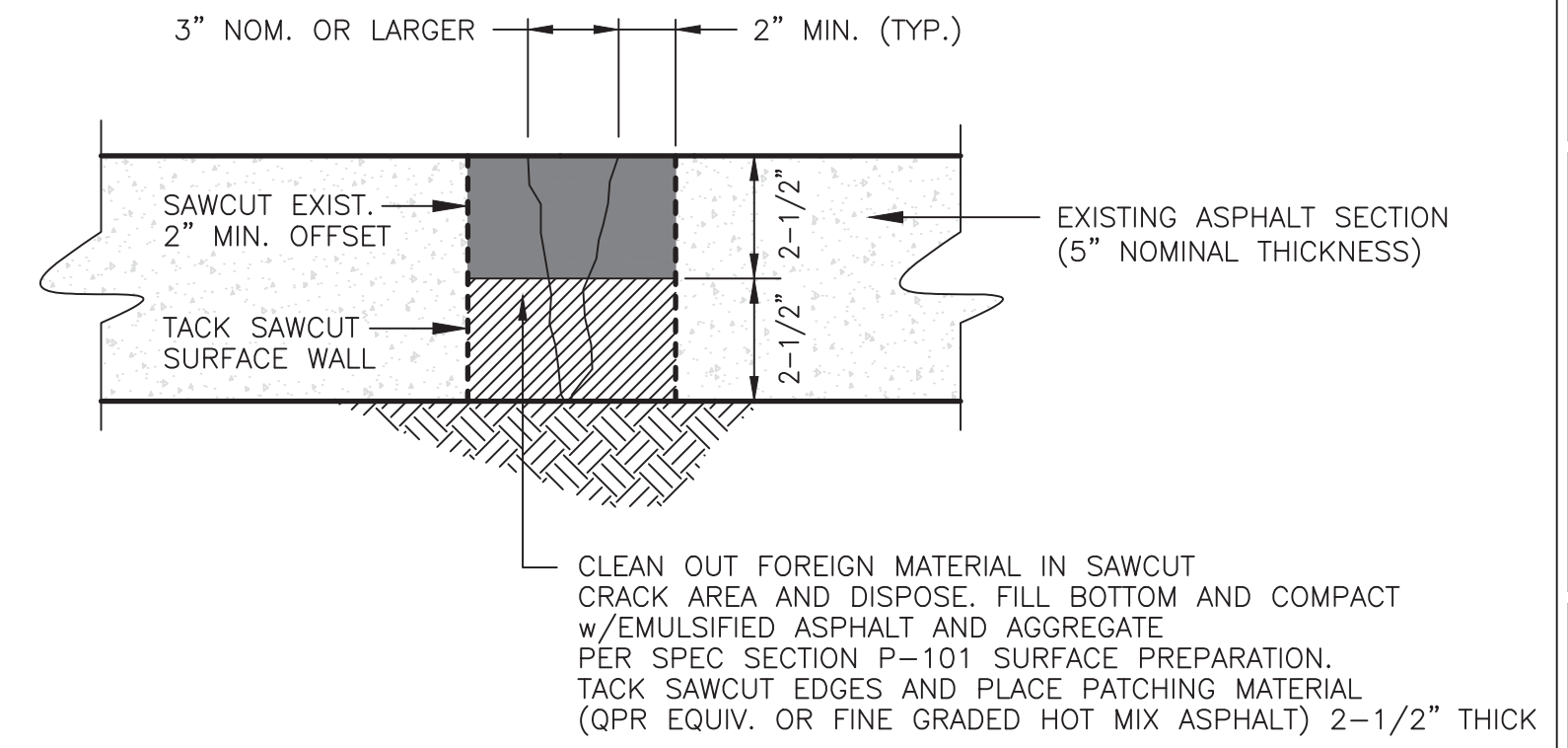
2701 Miles Road SE  
 Albuquerque, New Mexico 87106  
 505 242 5700 office  
 505 242 0673 fax  
 MolzenCorbin.com

*NOTICE OF EXTENDED PAYMENT PROVISION:  
 THIS CONTRACT ALLOWS THE OWNER TO MAKE  
 PAYMENT WITHIN 45 DAYS AFTER SUBMISSION  
 OF AN UNDISPUTED REQUEST FOR PAYMENT*

**NUMERIC SCALE CONFIRMATION**  
 DRAWINGS ARE DEPICTED AT INTENDED  
 NUMERIC SCALES  
 IF THIS BAR EQUALS ONE INCH



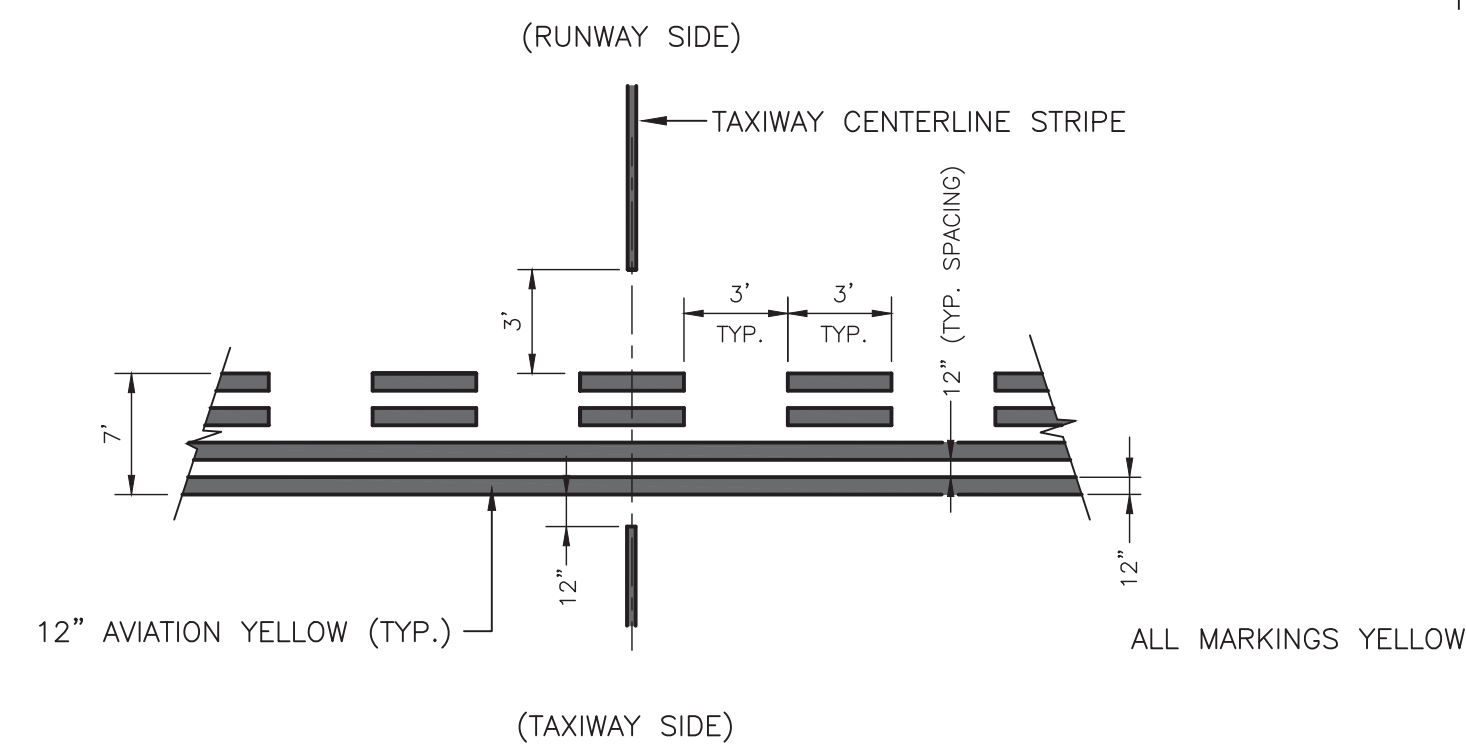
**AIRCRAFT TIE DOWN MARKING DETAIL**  
 SCALE: NONE



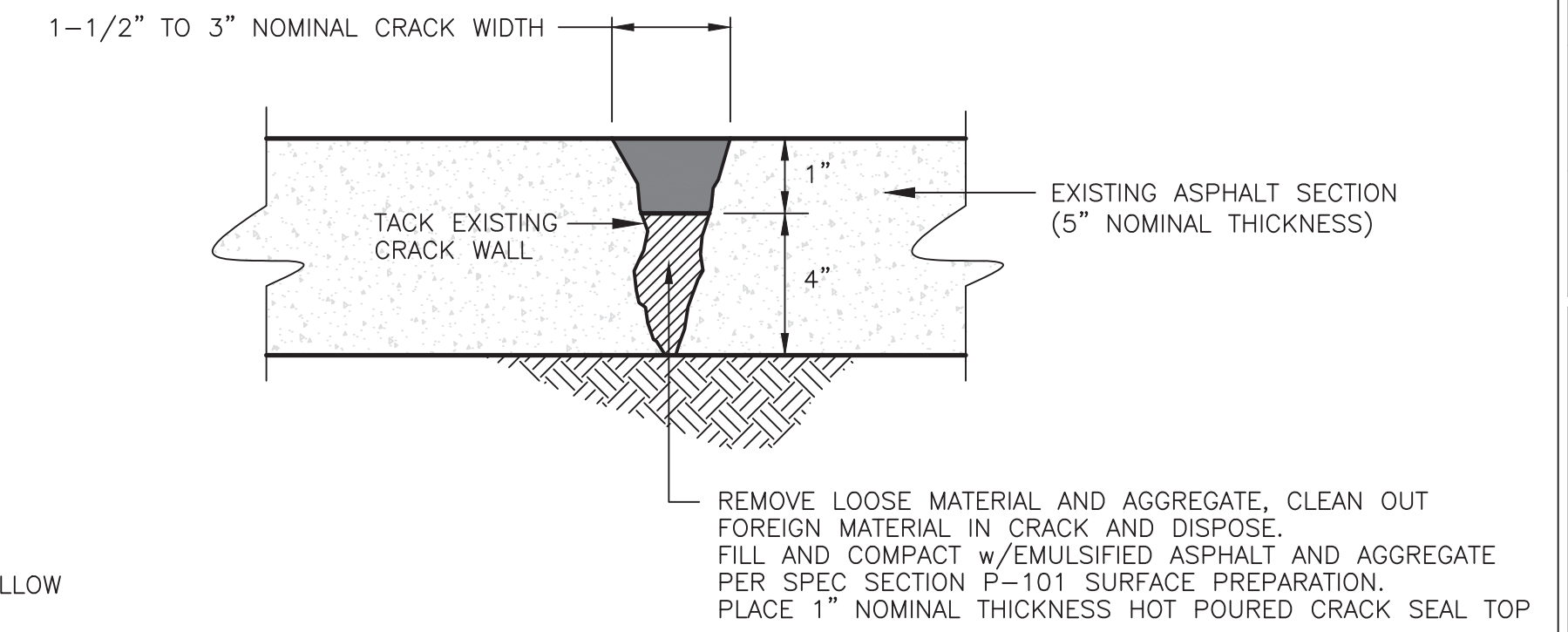
**CRACK FILL - DETAIL**  
 SCALE: NONE

**AIRFIELD MARKING GENERAL NOTES**

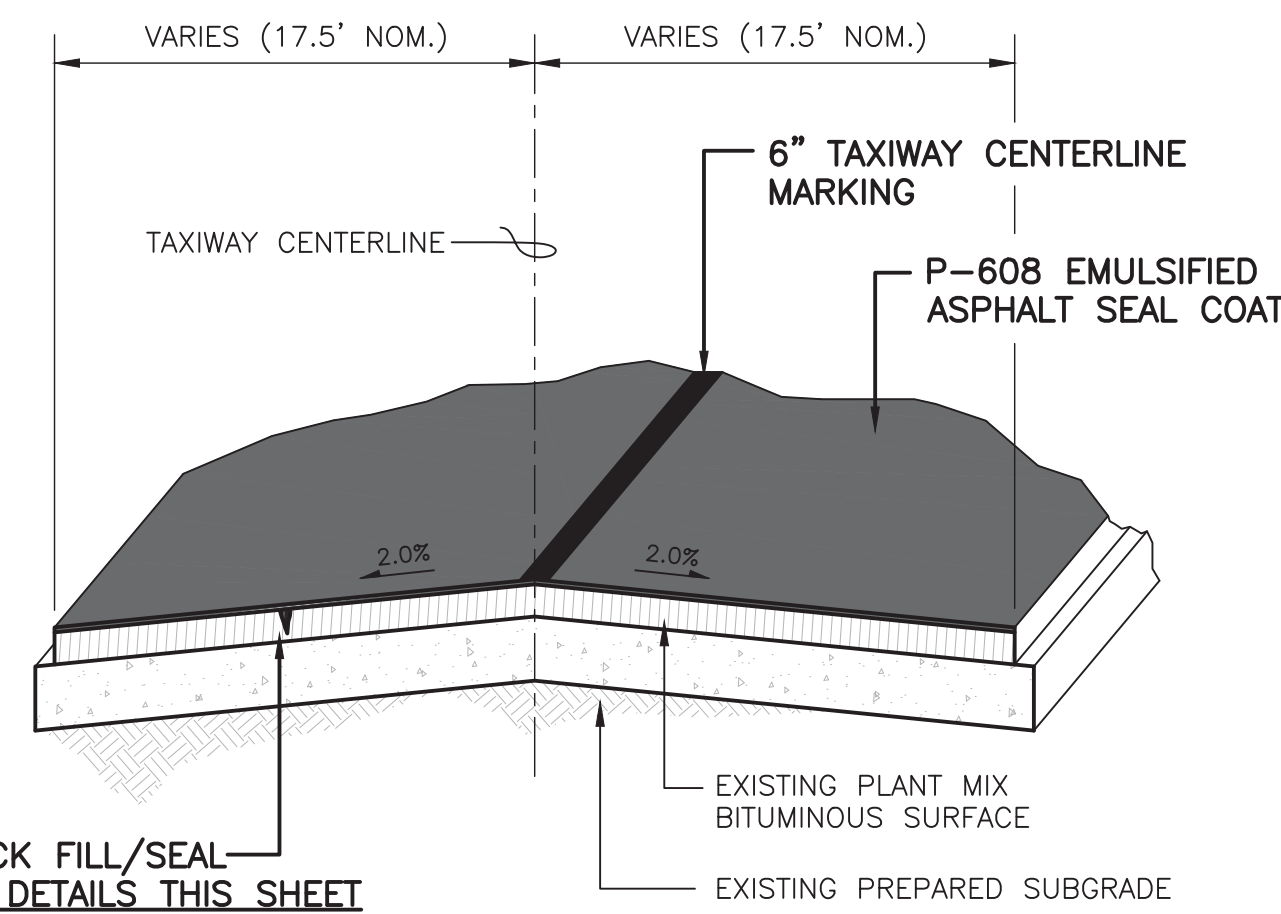
1. ALL MARKINGS SHALL HAVE GLASS REFLECTIVE BEADS, EXCEPT FOR BLACK OUTLINE. GLASS BEADS SHALL BE APPLIED IMMEDIATELY AFTER APPLICATION OF PAINT WITH AN APPLICATOR ATTACHED TO MARKING MACHINE. (AC 150/5370-10)
2. AVIATION WHITE MARKINGS SHALL ALWAYS HAVE PRECEDENCE OVER YELLOW MARKINGS. YELLOW MARKINGS SHALL NEVER BE PLACED OVER WHITE MARKINGS



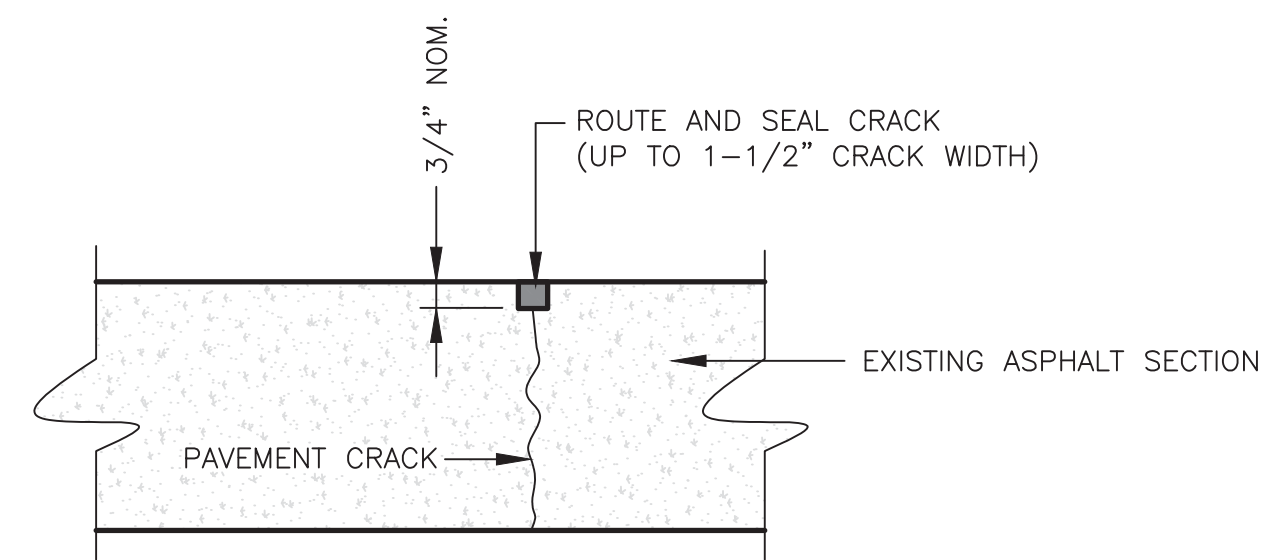
**RUNWAY HOLDING POSITION MARKING DETAIL**  
 SCALE: NONE



**MEDIUM RANGE CRACK SEAL - DETAIL**  
 SCALE: NONE



**TAXIWAY ASPHALT SEAL - SECTION**  
 SCALE: NONE



**NOTES**

1. SEALANT SHALL BE HOT POURED CRACK SEAL AS SPECIFIED UNDER ITEM P-605 AND SHALL BE INSTALLED IN ACCORDANCE WITH THE MFGR'S RECOMMENDATIONS.

**LOW RANGE CRACK SEAL - DETAIL**  
 SCALE: NONE

**MISCELLANEOUS DETAILS**

**APRON, TAXILANES, & TAXIWAY B PAVEMENT SEAL AND MARKING**  
 LAS VEGAS MUNICIPAL AIRPORT (LVS)  
 LAS VEGAS, NEW MEXICO

**C-501**

SHEET 10 / 10

DATE: 6/12/2023 8:52 AM  
 SAVE DATE: 6/12/2023 8:52 AM  
 I:\ADDESIGN\19 APRON, TAXIWAY PAVEMENT SEAL MARKING\DWG\CUV-501